

CiB-9220

KVM over IP

2014 Version 1.0

Copyright

This publication, including all photographs, illustrations and software, is protected under international copyright laws, with all rights reserved. Neither this manual, nor any of the material contained herein, may be reproduced without the express written consent of the manufacturer.

Copyright © 2014 DataON Storage.

Trademarks

All product names used in this manual are the properties of their respective owners and are acknowledged.

Disclaimer

The information in this document is subject to change without notice. The manufacturer makes no representations or warranties with respect to the contents hereof and specifically disclaims any implied warranties of merchantability or fitness for any particular purpose. Furthermore, the manufacturer reserves the right to revise this publication and to make changes from time to time in the content hereof without obligation of the manufacturer to notify any person of such revision or changes.

Safety Measures

Computer components and electronic circuit boards can be damaged by discharges of static electricity. Working on computers that are still connected to a power supply can be extremely dangerous. Follow these guidelines to avoid damage to the storage system or injury to yourself.

- Always disconnect power when carrying out work inside the unit.
- If possible, wear a grounded wrist strap when carrying out work inside the unit. Alternatively, discharge any static electricity by touching the bare metal chassis of the unit case, or the bare metal body of any other grounded appliance.
- Hold electronic circuit boards by the edges only. Do not touch the components on the board unless it is necessary to do so. Do not flex or stress the circuit board.
- Leave all components inside the static-proof packaging until you are ready to install the component.

Equipment Location

This equipment should only be accessed by SERVICE PERSONNEL or by USERS who have been instructed about the reasons for the restrictions applied to the location. Access is through the use of a TOOL or lock and key, or other means of security, and is controlled by the authority responsible for the location.

About this Guide

This guide describes CiB-9220 KVM over IP processes.

CiB-9220v KVM/IP

1. Power system. At splash screen, press or <F2> to enter BIOS Setup.



2. On BIOS Setup, use keyboard and select/highlight on option 'Server Mgmt'.



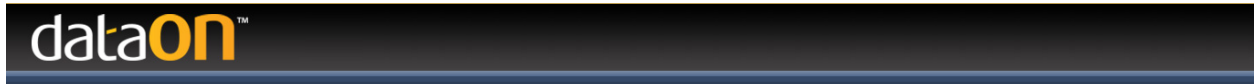
- On 'Server Mgmt', select 'BMC network configuration' option.



- On 'BMC network configuration', the station IP address (i.e. 192.168.7.199) is your KVM/IP access to your system via web browser.



- On your web browser, type in the station IP address. The default login (username // password) info is – admin // admin. Be sure that your browser has pop-ups enabled as well cookies turned on and to have Java enabled.



Username:

Password:

[Forgot Password?](#)

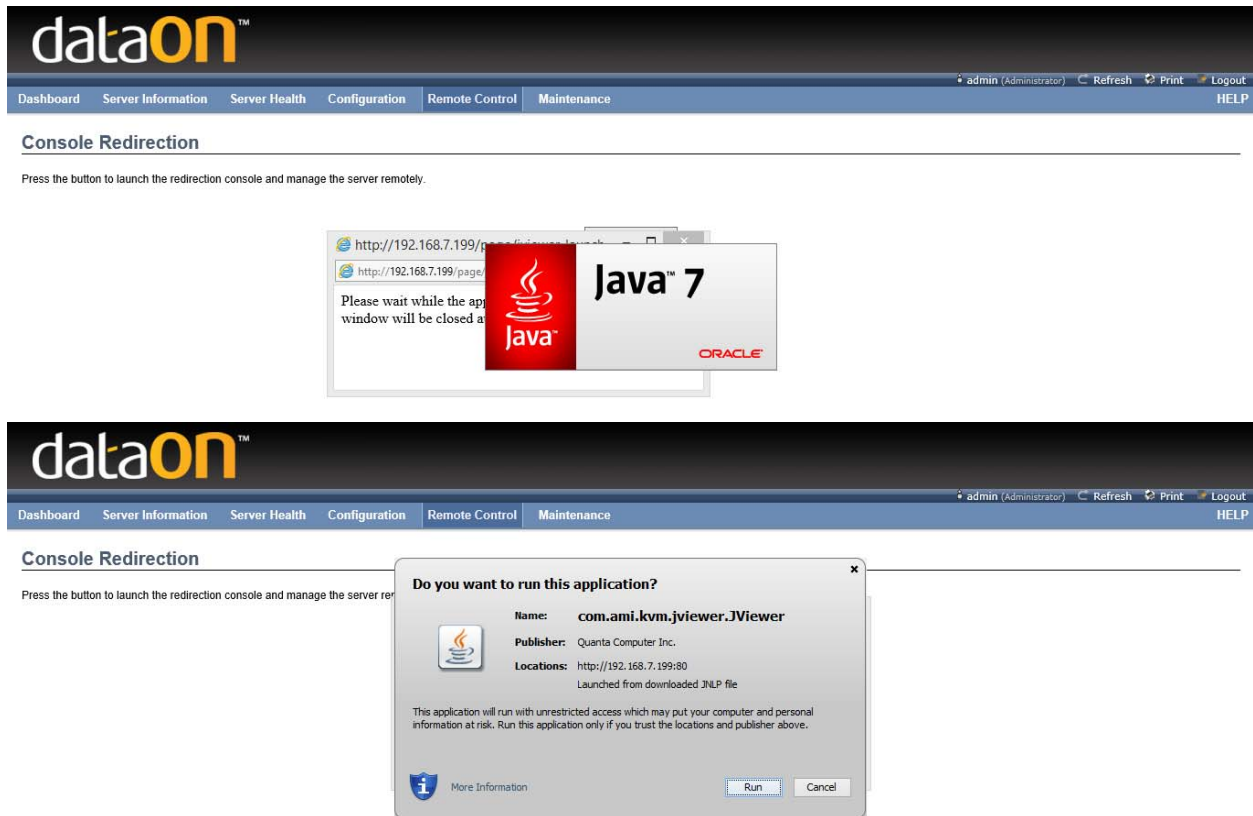
- Once logged in, click option 'Remote Control' and select sub-option 'Console Redirection'.

A screenshot of the dataon web interface. The top navigation bar includes 'Dashboard', 'Server Information', 'Server Health', 'Configuration', 'Remote Control', and 'Maintenance'. The 'Remote Control' menu is open, showing 'Console Redirection' and 'Server Power Control'. The main content area is divided into three sections: 'Device Information' (firmware, BIOS, network details), 'Sensor Monitoring' (a table of various sensors and their readings), and 'Event Logs' (a pie chart showing system resource usage).

7. On 'Console Redirection', select 'Java Console'.



8. Upon logging onto the system via KVM/IP, these pop-ups may appear. Be sure to click 'Run' to run the Java enablement on the web browser to utilize KVM/IP.



CiB-9220v KVM/IP – Server Power Controls

1. Once logged into the KVM/IP, click option 'Remote Control' and select sub-option 'Server Power Control'.

dataon™

admin (Administrator) Refresh Print Logout HELP

Dashboard | Server Information | Server Health | Configuration | Remote Control | Maintenance

Dashboard | Console Redirection | Server Power Control

Dashboard gives the overall information about the status of the device and remote server.

Device Information

Firmware Revision: 1.37
Firmware Build Time: Mar 12 2014 14:24:21 CST
BIOS Version: S2LR4A09
X5 Top PDB Version: 1.34
X5 Bot PDB Version: 1.34
MB Position: 2
BMC Date & Time: Fri, 06 Jun 2014 13:34:55
BMC Chipset: AST2300
System MAC 1: 08:9E:01:CF:00:5F
System MAC 2: 08:9E:01:CF:00:60

Network Information (Edit)

Host Name: QCT089E01CF0061
MAC Address: 08:9E:01:CF:00:61
V4 Network Mode: DHCP
IPv4 Address: 192.168.7.199
V6 Network Mode: DHCP
IPv6 Address: ..
IPv6 Link Local Address: fe80::a9e:1ff:fe61

Sensor Monitoring

Status	Sensor	Reading	
●	P12V_AUX	12.449 Volts	🔊
●	MB1_Temp	48 ° C	🔊
●	MB2_Temp	55 ° C	🔊
●	CPU0_Temp	56 ° C	🔊
●	CPU1_Temp	49 ° C	🔊
●	HDDBP_Ambient1	35 ° C	🔊
●	HDDBP_Ambient2	33 ° C	🔊
●	PDB_FAN3A	6400 RPM	🔊
●	PDB_FAN4A	6300 RPM	🔊
●	PDB_FAN3B	5500 RPM	🔊
●	PDB_FAN4B	5500 RPM	🔊
●	PSU_Input_Power	222 Watts	🔊

Event Logs

Power Unit (3.52%)
Others (16.72%)
Free Space (79.76%)

2. On 'Server Power Control', the user is able to utilize the power controls as shown below.

dataon™

admin (Administrator) Refresh Print Logout HELP

Dashboard | Server Information | Server Health | Configuration | Remote Control | Maintenance

Power Control and Status

The current server power status is shown below. To perform a power control operation, select one of the options below and press "Perform Action".

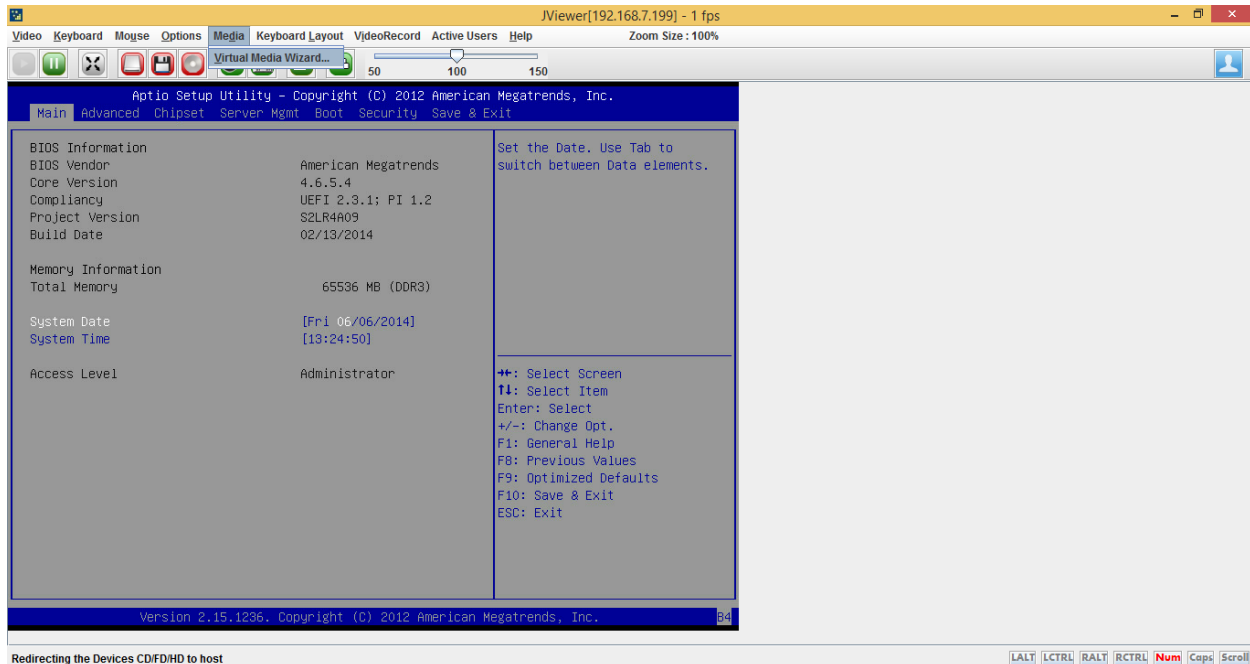
Host is currently on

- ☒ Reset Server
- ☐ Power Off Server - Immediate
- ☐ Power Off Server - Orderly Shutdown
- ☐ Power On Server
- ☐ Power Cycle Server

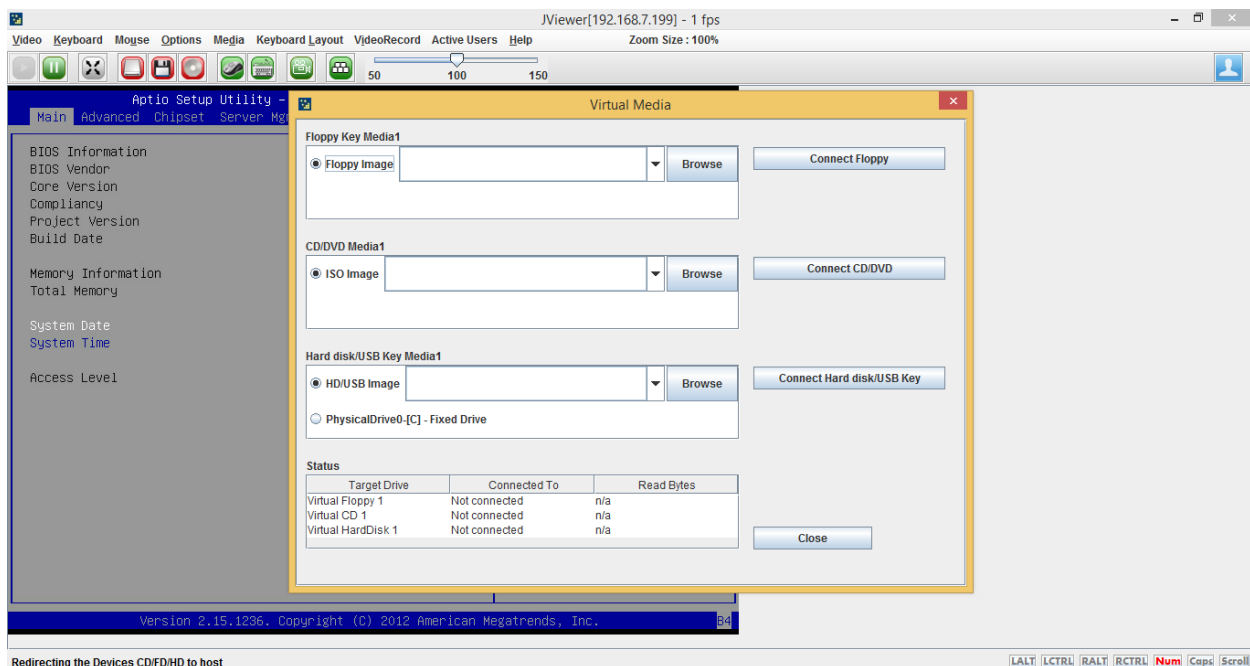
Perform Action

CiB-9220v KVM/IP – Virtual Media

1. Once logged into the KVM/IP, click option 'Media' and select sub-option 'Virtual Media Wizard'.

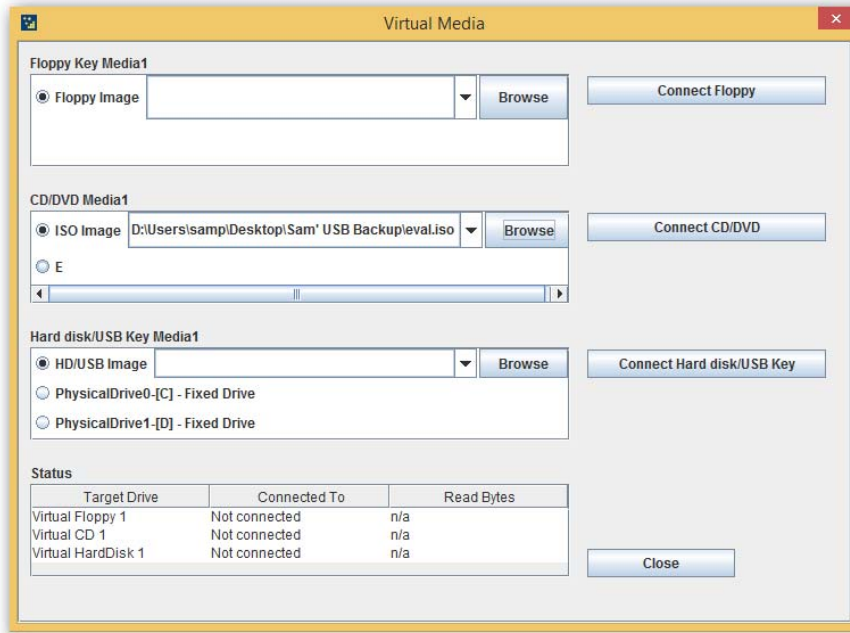


2. On this menu, you can mount your own media (i.e. Floppy Disk, CD/DVD, or HDD/USB) to the system. When finished, click 'Close'. The KVM/IP will require a Power Cycle if virtual media is mounted when system is on BIOS (screenshot below). If system is on OS, no reboot is needed as virtual media can be immediately accessed.

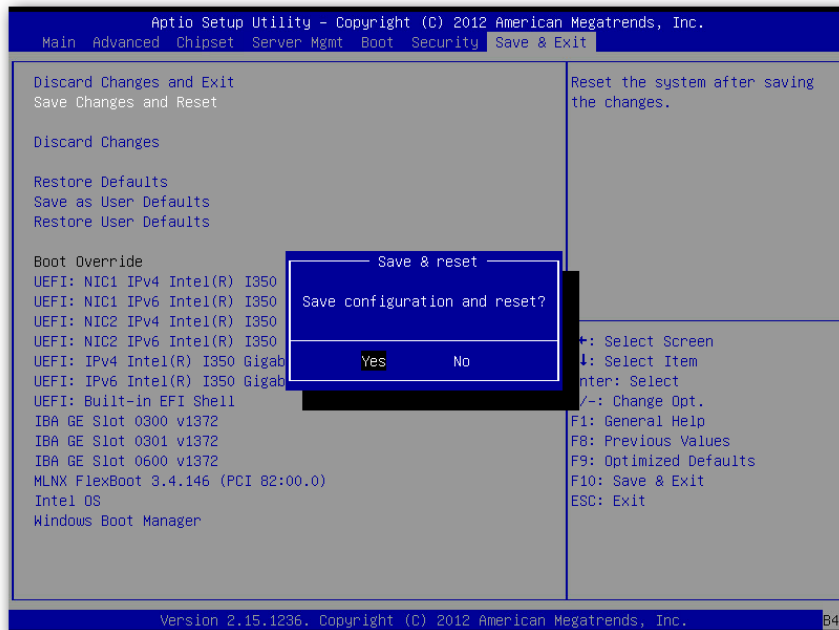


Example:

We can mount the image to virtual DVD as image. After mount the image click “connect CD/DVD”.



Restart the CiB-9220 and press “F11” go to boot selection.



Select **"UEFI: AMI Virtual CDROM0 1.00"** to install the image.

***CiB-9220 ONLY Support UEFI boot up ***

