

Document Name:

DNS-1660 CMA INSTALLATION



Document Type:	INSTRUCTION
Department:	Engineering
Document Number:	DNS-1660-CMA2014
Document Revision	2014

This document is confidential to DataON Storage and any reproduction, disclosure, or use in whole or in part is expressly prohibited, except as may be specifically authorized by prior written agreement or permission of DataON Storage Copyright © 2014.

## REVISION HISTORY

Rev	Date	Change Description
14	09-18-2014	DNS-1660 CMA 4U

TABLE OF CONTENTS

1. Scope..... 4

2. Route the Cables ..... 5

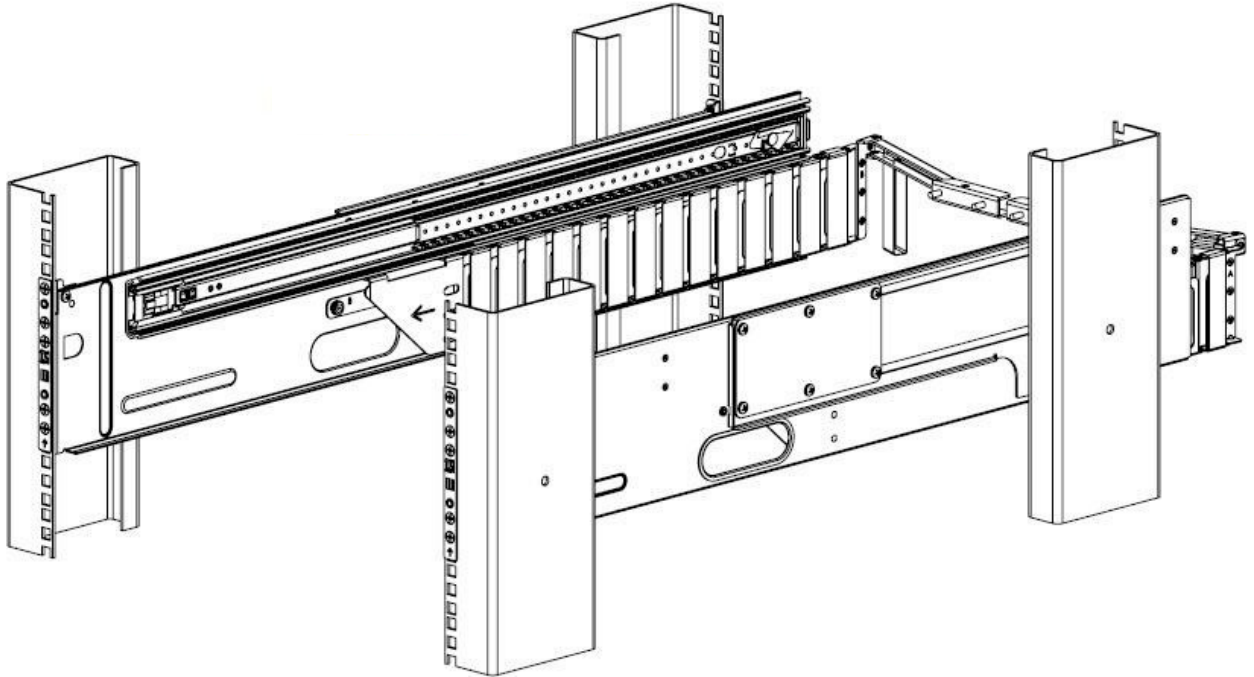
3. Fasten the CMA to the Railkit (Both Sides) ..... 7

4. Fasten the CMA to the Chassis..... 8

5. Connect Cables to the IO and Power Supply. .... 9

## 1. Scope

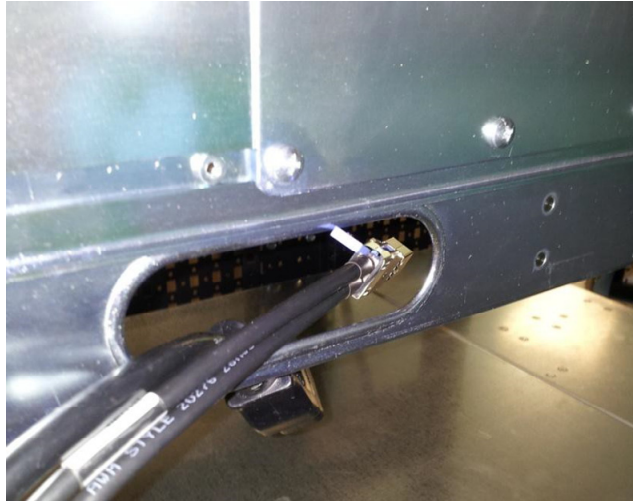
This is the installation guide for the DNS-1660 Cable Management Arm (CMA).



DNS-1660 CMA Installed with Rail Kit in Rack

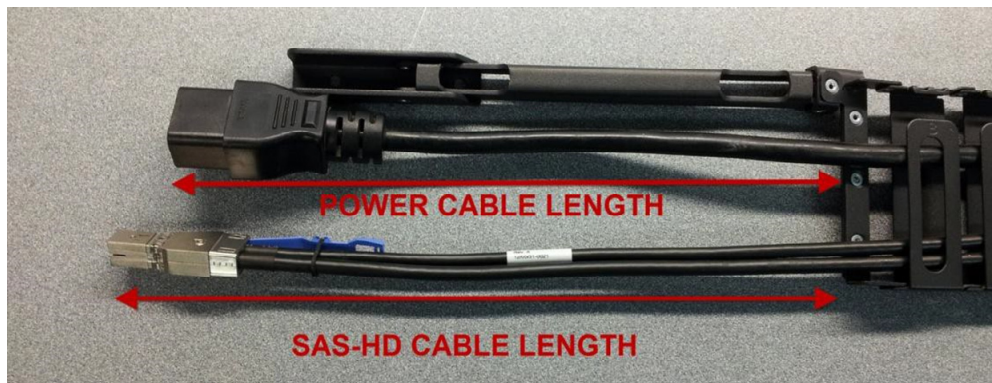
## Route the Cables

1. Route the cables through the cable passage from the outside toward the inside on the rail kit (both sides).



**Figure 1 Cable routing through rail kit**

2. Route the cables through the CMA (both sides)
  1. Route the mini SAS-HD cables first. Place the end of each mini SAS-HD cable 11.0 - 12.0 inches (280mm – 305mm) from the last link in the CMA.
  2. Route the power cable last placing the end of the power cable 9.5 - 11.0 inches (241-280mm) from the last link in the CMA.



**Figure 2 Cable lengths**

3. Secure the last link of the CMA by wrapping the provided hook and loop around it as shown in figure 3.

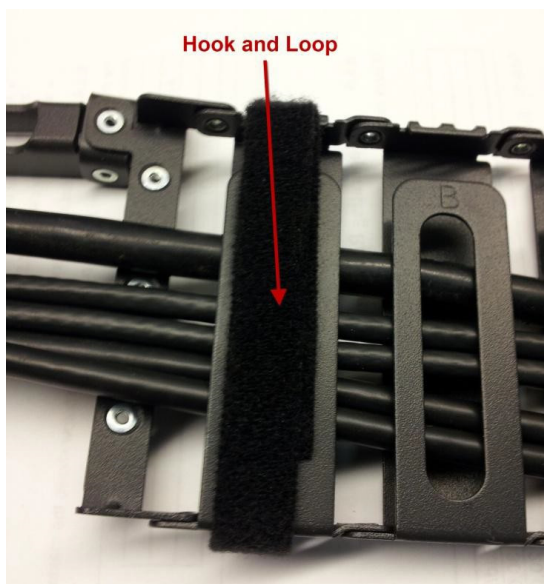


Figure 3 Hook and Loop application

### Fasten the CMA to the Railkit (Both Sides)

1. Hook the flanges of the first link of the CMA under the rail kit slide. Next, align the slots on the first link of the CMA with the embedded keyhole fasteners on the rail kit. Slide the rail kit forward and tighten the thumbscrew finger tight.

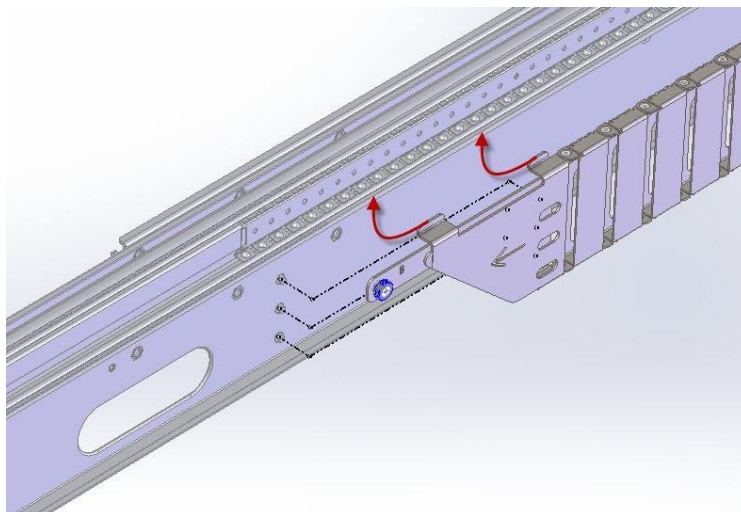


Figure 4 Fasten the CMA to railkit

2. Temporarily support the rear of the CMA assembly with the bottom flange of the railkit.



Figure 5 Temporary CMA support

The CMA must always be supported either by the railkit support flange or by fastening to the rear of the chassis.



## Fasten the CMA to the Chassis

1. Install the Chassis into the rail kit and fasten the CMA to the rear of the chassis with four 10-32 screws.

Torque 10-32 screws 28.0 – 29.7 in-lbs (3.16 – 3.36 Nm)

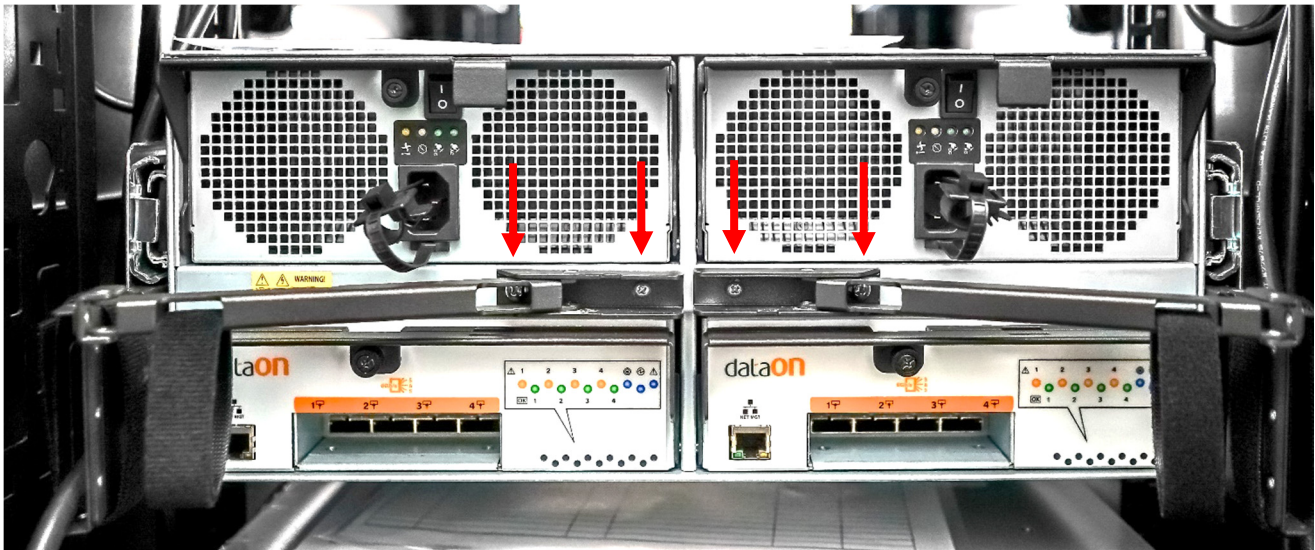


Figure 6 Fasten CMA to Chassis



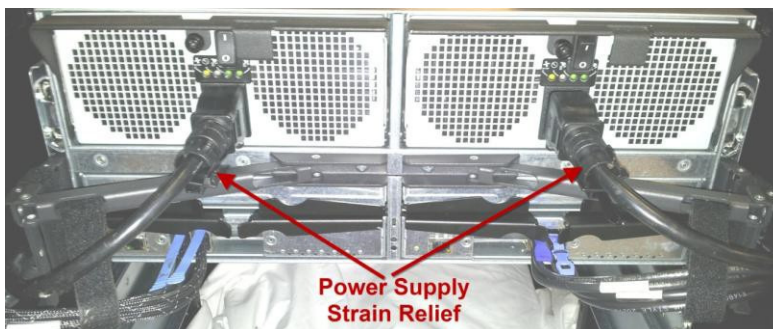
## Connect Cables to the IO and Power Supply.

1. Connect the mini SAS-HD cables to the IO canisters as shown in figure 7.



**Figure 7 IO Cable Routing**

2. Plug the power cable into the power supply and secure the power supply retention strap.



**Figure 8 Power Supply Strain Relief**

3. Apply the hook and loop fastener through the CMA cross bar and mini SAS-HD cable (both sides).



**Figure 9 mini SAS-HD Cable Hook and Loop**

