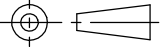



CHANGE NO.	REV.	REVISION DESCRIPTION	DATE	APPROVED
DNS4RK2014	A1	INITIAL RELEASE	8/1/14	RS

4U DNS Series
RAIL KIT INSTALLED
IN RACK

DATE	01-Aug-14	COPYRIGHT 2014	
ENG	Rocky/Sam		
FILE NAME	DNS 4U-Rail-Kit		
UNLESS OTHERWISE SPECIFIED DIMENSIONS ARE IN MILLIMETERS			
TOLERANCES OTHER THAN SPECIFIED:			
MILLIMETERS			
X = +/- 0.5			
X.X = +/- 0.3			
X.XX = +/- 0.13			
ANGLES: ±0.5°		DRAFT ANGLES: ± 0.3°	
TEMPLATE REVISION	THIRD ANGLE PROJECTION		
A5			

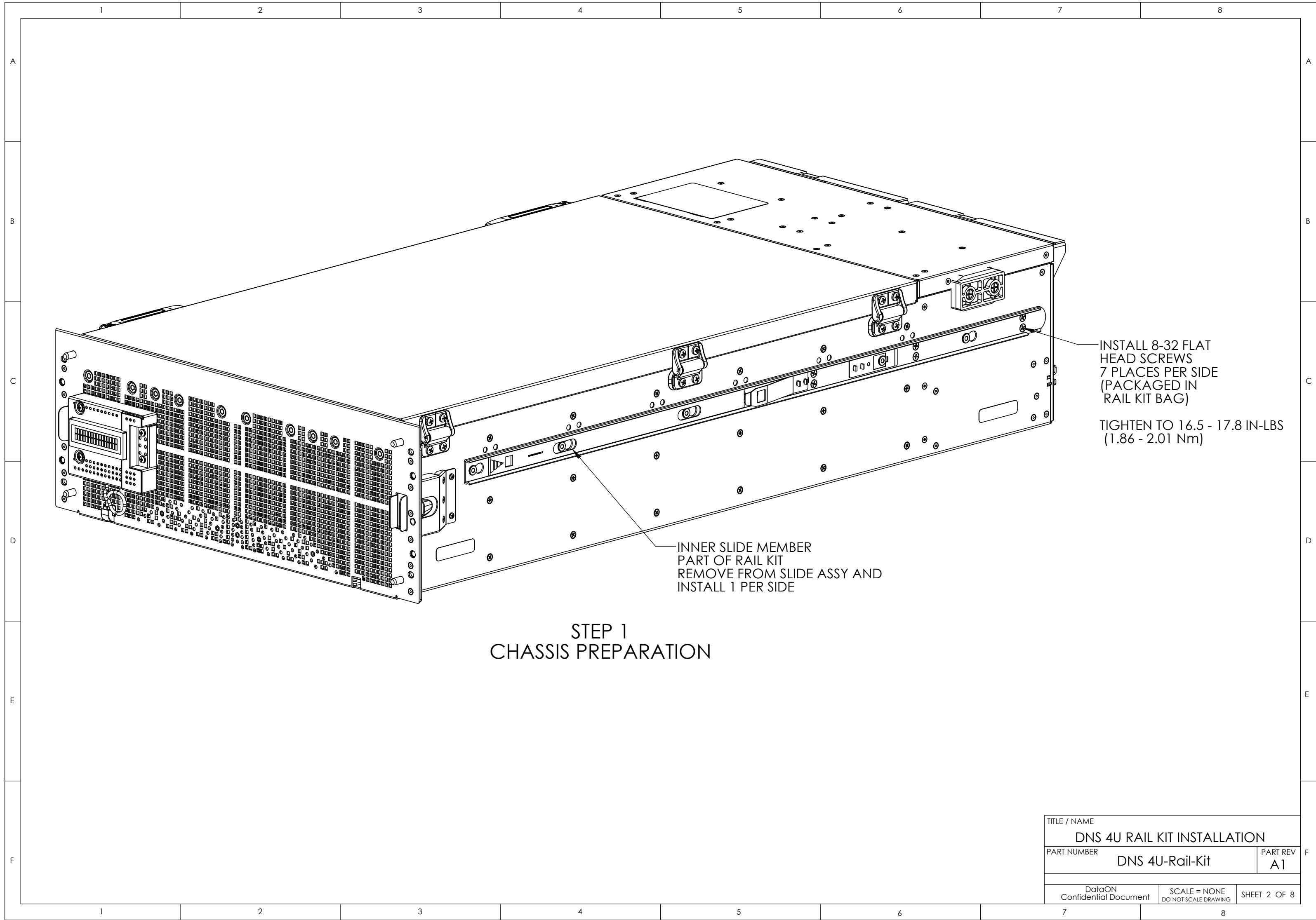


DESCRIPTION
DNS 4U RAIL KIT INSTALLATION

PART NUMBER DNS 4U-Rail-Kit	PART REV A1
--------------------------------	----------------

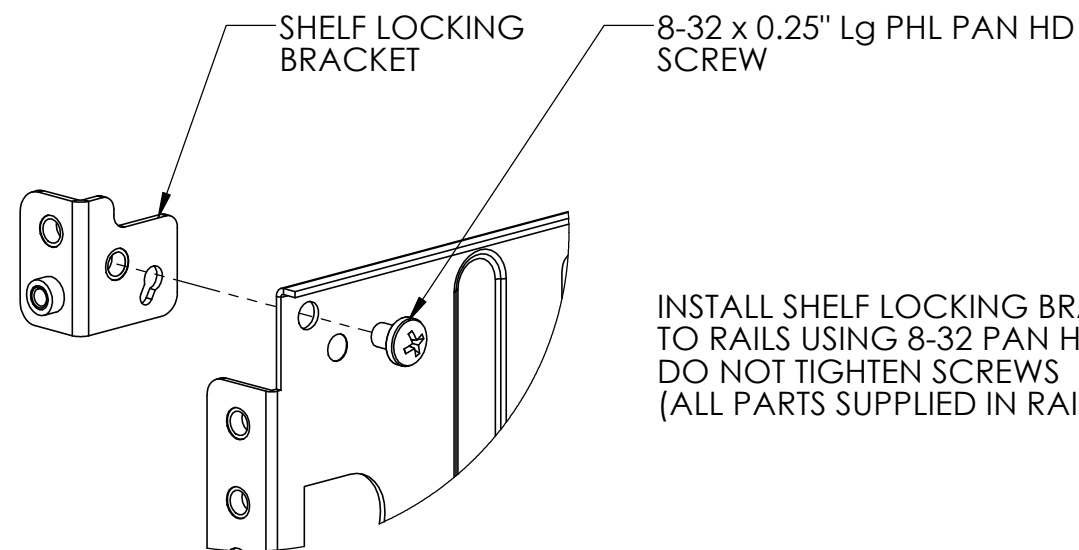
CONFIDENTIAL DOCUMENT

SCALE = NONE / DO NOT SCALE DRAWING	SHEET 1 OF 8
-------------------------------------	--------------



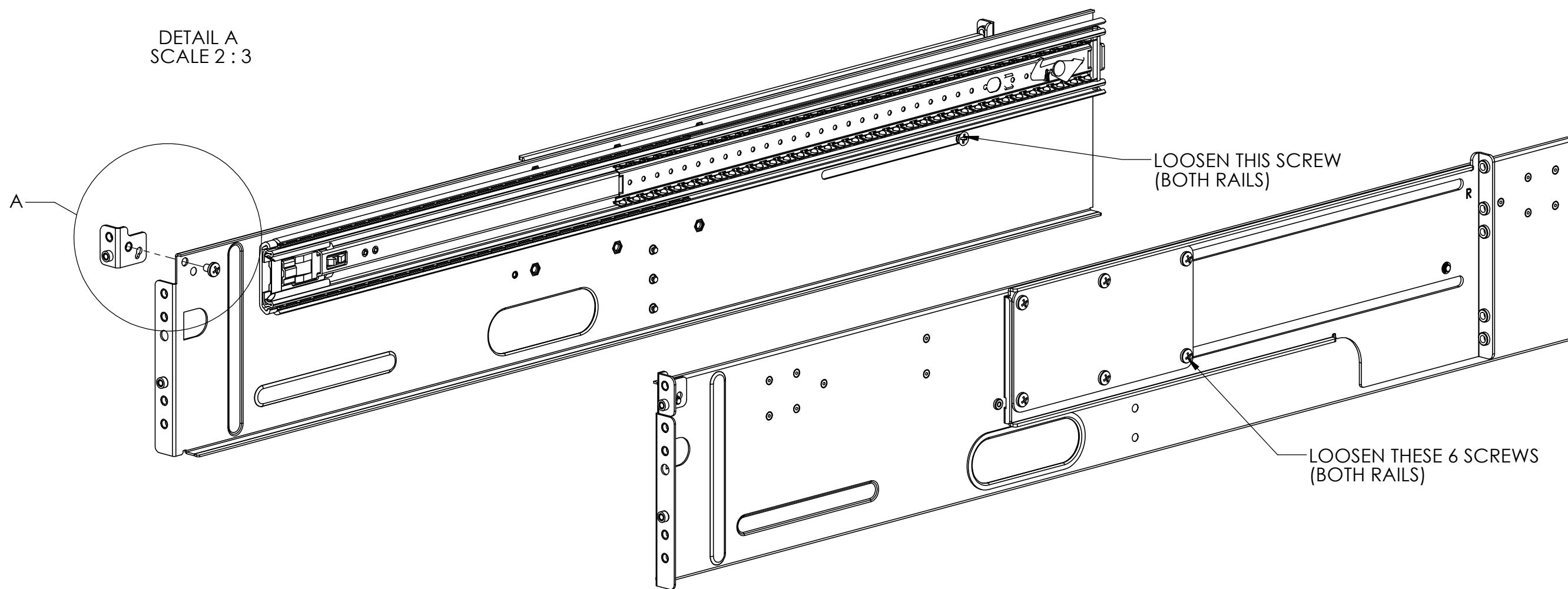
STEP 1
CHASSIS PREPARATION

TITLE / NAME		
DNS 4U RAIL KIT INSTALLATION		
PART NUMBER	DNS 4U-Rail-Kit	PART REV
		A1
DataON Confidential Document	SCALE = NONE DO NOT SCALE DRAWING	SHEET 2 OF 8



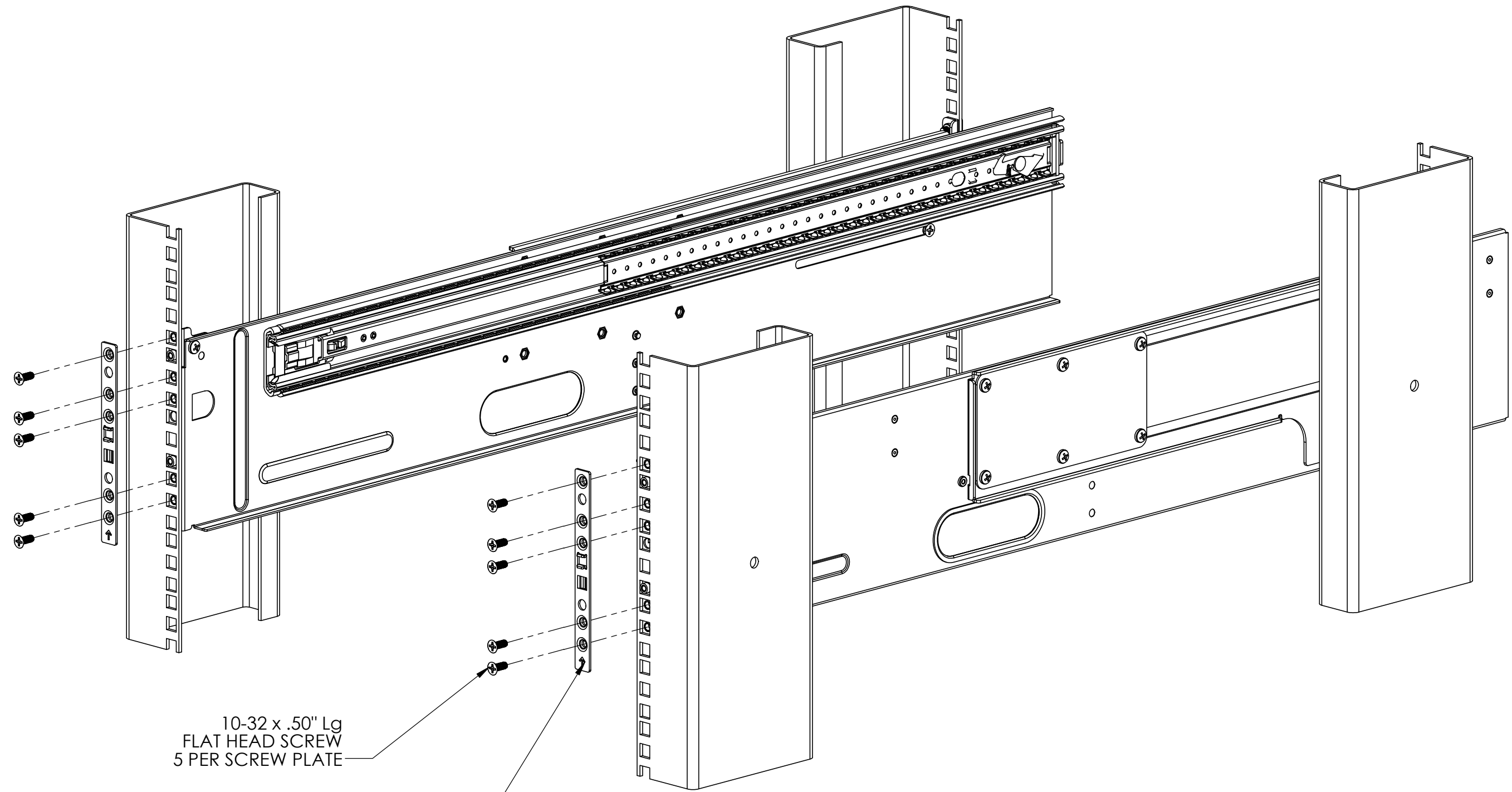
INSTALL SHELF LOCKING BRACKETS
TO RAILS USING 8-32 PAN HEAD SCREWS
DO NOT TIGHTEN SCREWS
(ALL PARTS SUPPLIED IN RAIL KIT BAGS)

DETAIL A
SCALE 2 : 3



STEP 2 ADJUSTABLE RAIL PREPARATION

TITLE / NAME		
DNS 4U RAIL KIT INSTALLATION		
PART NUMBER	DNS 4U-Rail-Kit	PART REV A1
DataON Confidential Document	SCALE = NONE DO NOT SCALE DRAWING	SHEET 3 OF 8



10-32 x .50" Lg
FLAT HEAD SCREW
5 PER SCREW PLATE

RAIL KIT
SCREW PLATE
1 PER VERTICAL RAIL IN FRONT

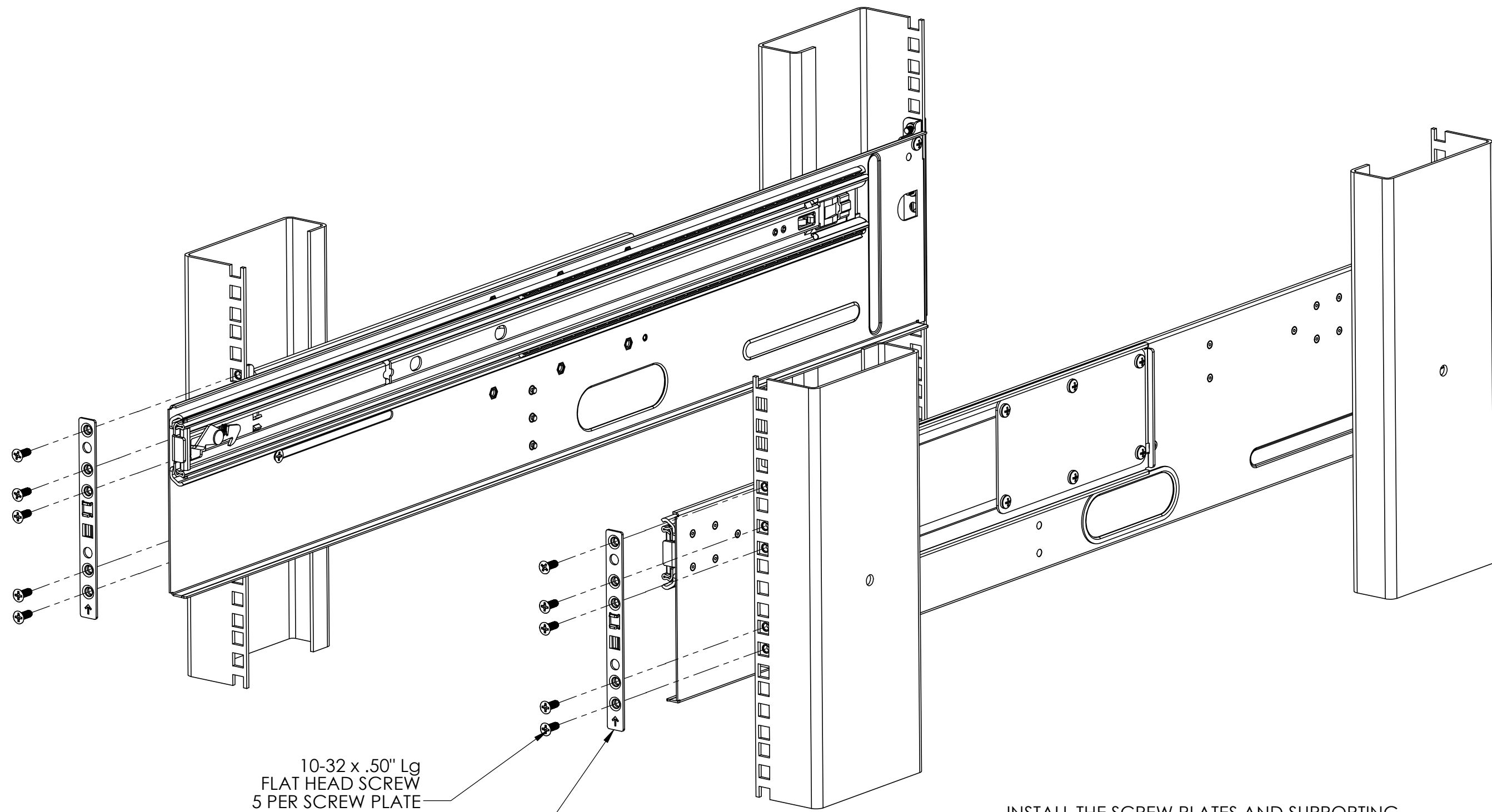
INSTALL ADJUSTABLE RAIL ASSEMBLIES
BOTH RIGHT AND LEFT INTO THE CABINET

INSTALL THE SCREW PLATES AND SUPPORTING
10-32 FLAT HEAD SCREWS

LOOSELY TIGHTEN THE FLAT HEAD SCREWS

STEP 3 ADJUSTABLE RAIL INSTALL (FRONT)

TITLE / NAME		
DNS 4U RAIL KIT INSTALLATION		
PART NUMBER	DNS 4U-Rail-Kit	PART REV
		A1
DataON Confidential Document	SCALE = NONE DO NOT SCALE DRAWING	SHEET 4 OF 8



10-32 x .50" Lg
FLAT HEAD SCREW
5 PER SCREW PLATE

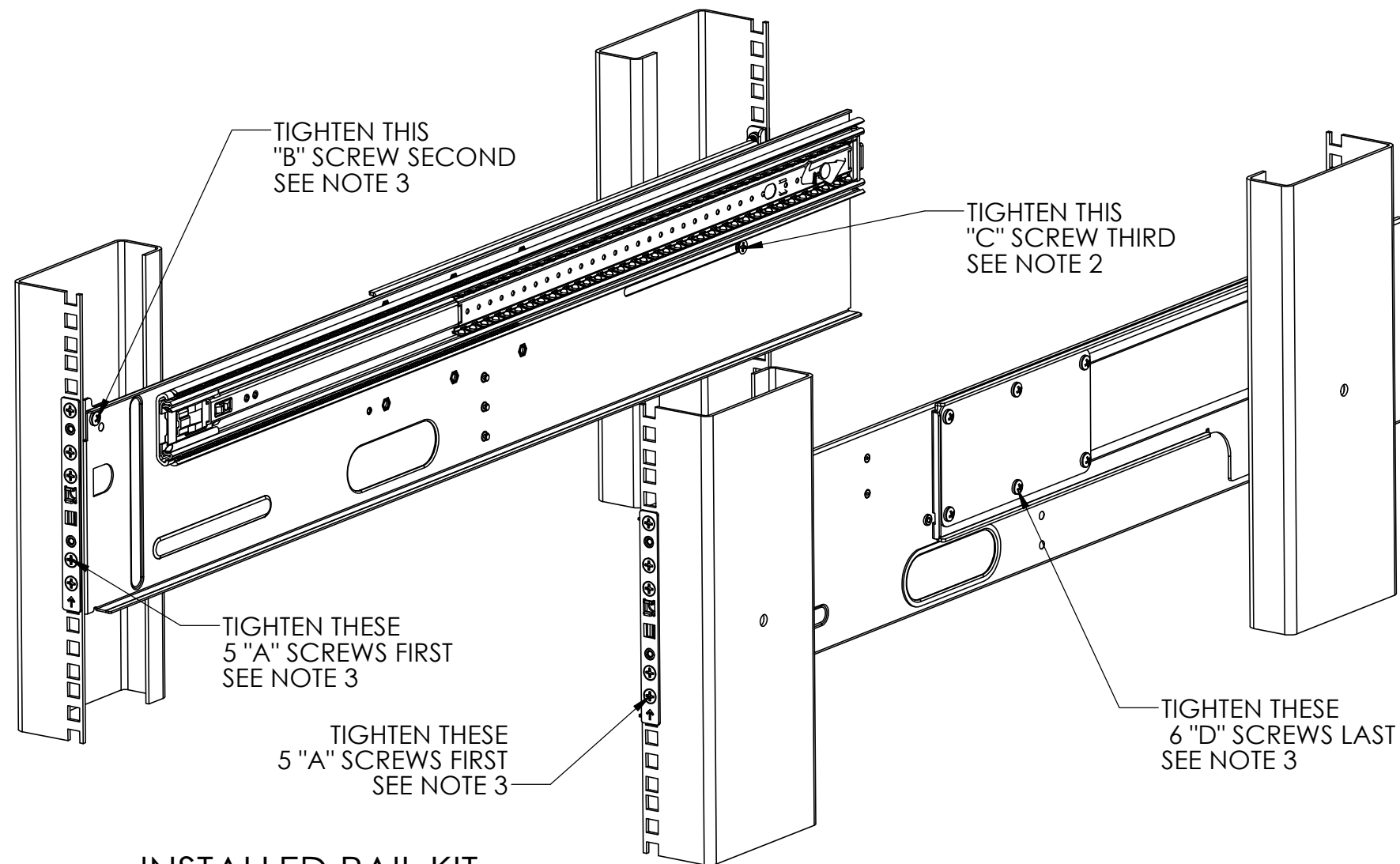
RAIL KIT
SCREW PLATE
1 PER VERTICAL RAIL IN REAR

STEP 3 (cont)
ADJUSTABLE RAIL INSTALL
(REAR)

INSTALL THE SCREW PLATES AND SUPPORTING
10-32 FLAT HEAD SCREWS

LOOSELY TIGHTEN THE FLAT HEAD SCREWS

TITLE / NAME		
DNS 4U RAIL KIT INSTALLATION		
PART NUMBER	DNS 4U-Rail-Kit	PART REV
		A1
DataON Confidential Document	SCALE = NONE DO NOT SCALE DRAWING	SHEET 5 OF 8

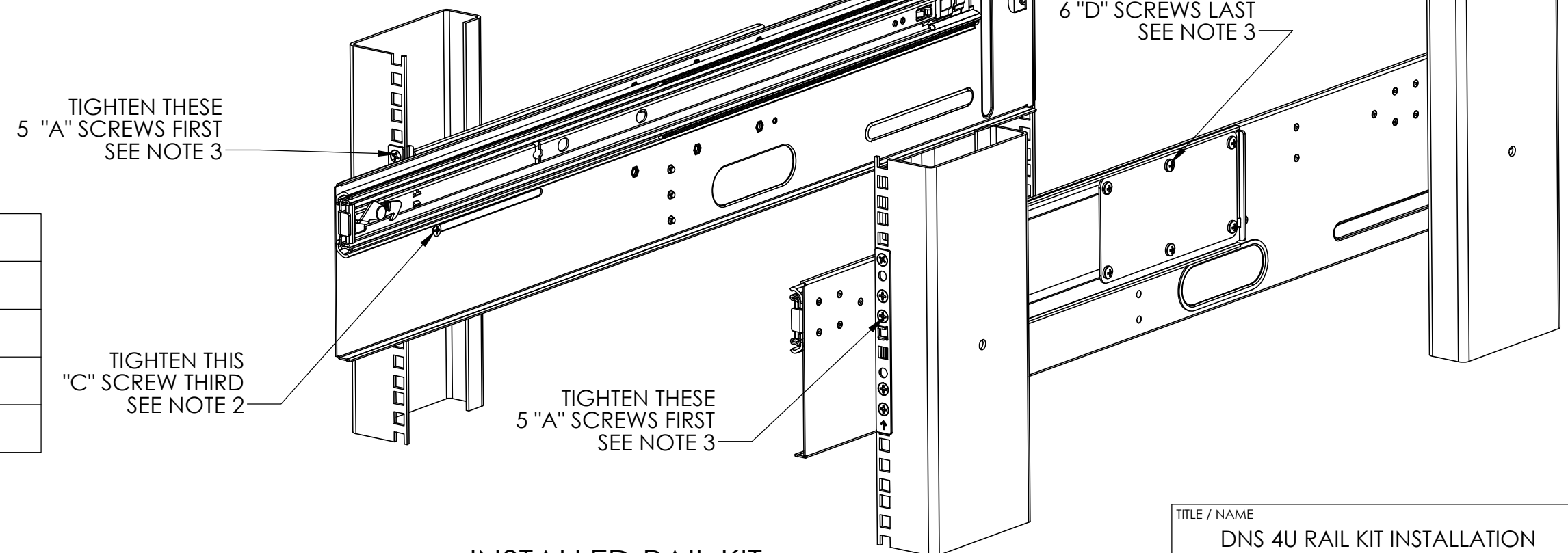


INSTALLED RAIL KIT
TFR-ISO

1. ONCE THE RAILS ARE FULLY INSTALLED INTO THE CABINET PROCEED TO TIGHTEN ALL 36 SCREWS AS SHOWN.
2. ALL 8-32 FASTENERS TO 16.5 - 17.8 IN-LBS (1.86 - 2.01 Nm)
3. ALL 10-32 FASTENERS TO 28.0 - 29.7 IN-LBS (3.16 - 3.36 Nm)

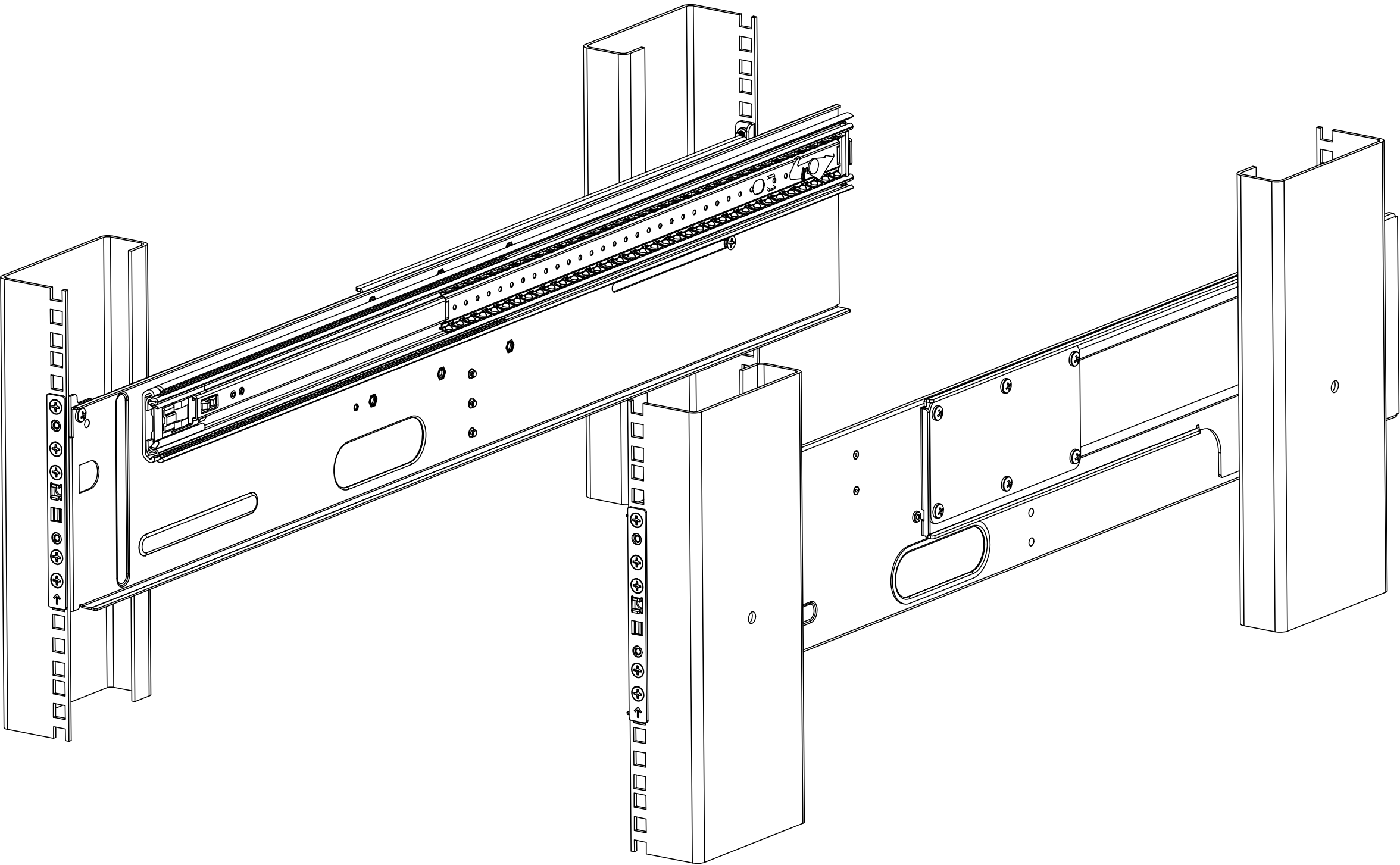
SCREW	SEQUENCE
SCREWS LABELED "A"	FIRST
SCREWS LABELED "B"	SECOND
SCREWS LABELED "C"	THIRD
SCREWS LABELED "D"	LAST

STEP 4
TIGHTENING OF ALL FASTENERS



INSTALLED RAIL KIT
TRL-ISO

TITLE / NAME		
DNS 4U RAIL KIT INSTALLATION		
PART NUMBER	DNS 4U-Rail-Kit	PART REV
		A1
DataON Confidential Document	SCALE = NONE DO NOT SCALE DRAWING	SHEET 6 OF 8



INSTALLED RAIL KIT
TFR-ISO

TITLE / NAME		
DNS 4U RAIL KIT INSTALLATION		
PART NUMBER	DNS 4U-Rail-Kit	PART REV
		A1
DataON Confidential Document		SCALE = NONE DO NOT SCALE DRAWING
		SHEET 7 OF 8

