

# **CiB-9470**

**KVM over IP**

## Copyright

This publication, including all photographs, illustrations and software, is protected under international copyright laws, with all rights reserved. Neither this manual, nor any of the material contained herein, may be reproduced without the express written consent of the manufacturer.

Copyright © 2014 DataON Storage.

## Trademarks

All product names used in this manual are the properties of their respective owners and are acknowledged.

## Disclaimer

The information in this document is subject to change without notice. The manufacturer makes no representations or warranties with respect to the contents hereof and specifically disclaims any implied warranties of merchantability or fitness for any particular purpose. Furthermore, the manufacturer reserves the right to revise this publication and to make changes from time to time in the content hereof without obligation of the manufacturer to notify any person of such revision or changes.

## Safety Measures

Computer components and electronic circuit boards can be damaged by discharges of static electricity. Working on computers that are still connected to a power supply can be extremely dangerous. Follow these guidelines to avoid damage to the storage system or injury to yourself.

- Always disconnect power when carrying out work inside the unit.
- If possible, wear a grounded wrist strap when carrying out work inside the unit. Alternatively, discharge any static electricity by touching the bare metal chassis of the unit case, or the bare metal body of any other grounded appliance.
- Hold electronic circuit boards by the edges only. Do not touch the components on the board unless it is necessary to do so. Do not flex or stress the circuit board.
- Leave all components inside the static-proof packaging until you are ready to install the component.

## Equipment Location

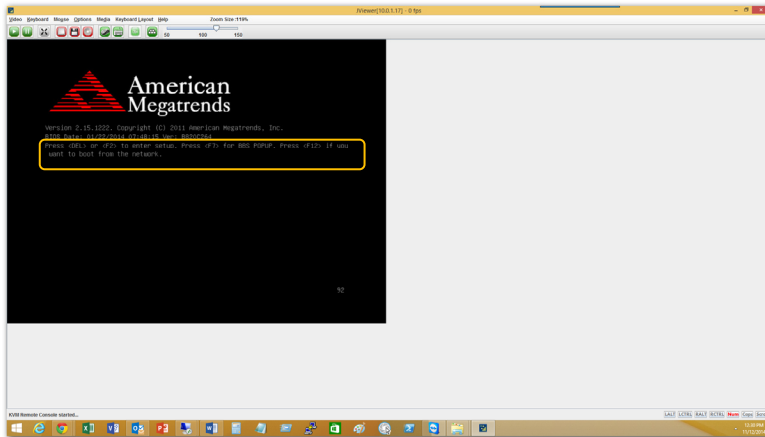
This equipment should only be accessed by SERVICE PERSONNEL or by USERS who have been instructed about the reasons for the restrictions applied to the location. Access is through the use of a TOOL or lock and key, or other means of security, and is controlled by the authority responsible for the location.

## About this Guide

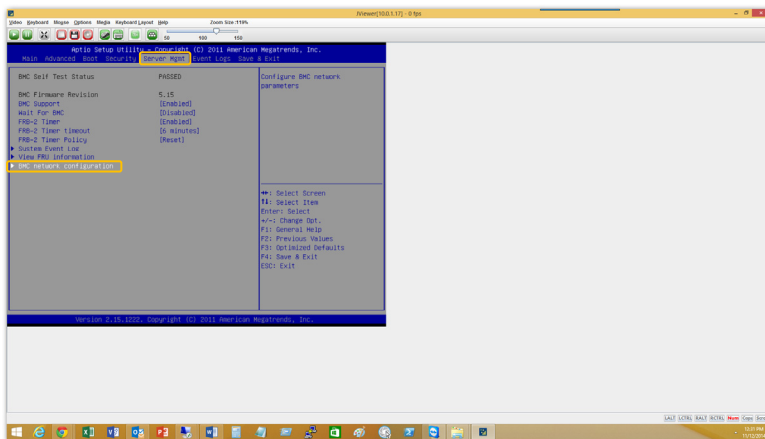
This guide describes CiB-9470 KVM over IP processes.

# CiB-9470 KVM/IP

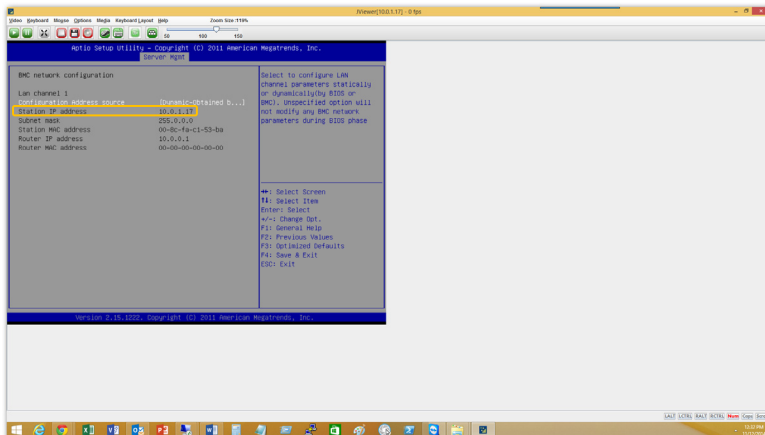
1. Power system. At splash screen, press <DEL> or <F2> to enter BIOS Setup.



2. On BIOS Setup, use keyboard and select/highlight on option 'Server Mgmt'.



3. On 'BMC network configuration', the station IP address (i.e. 10.0.1.17) is your KVM/IP access to your system via web browser.



- On your web browser, type in the station IP address. The default login (username // password) info is – admin // admin. Be sure that your browser has pop-ups enabled as well cookies turned on and to have Java enabled.

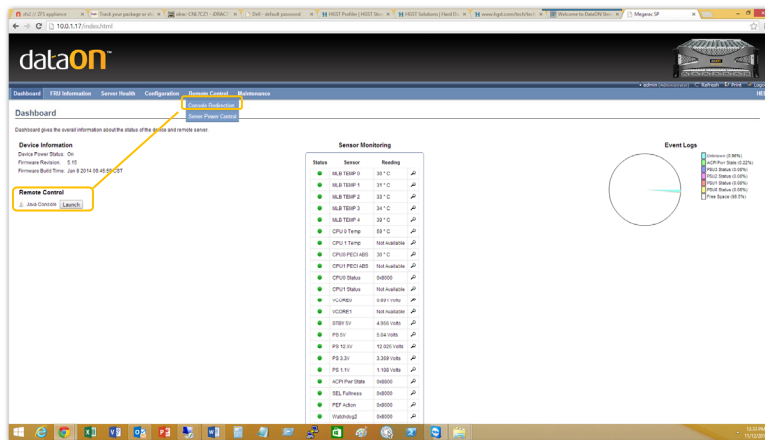


Username:

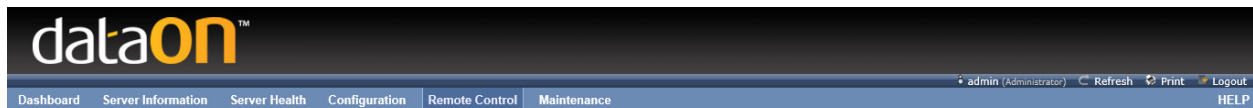
Password:

[Forgot Password?](#)

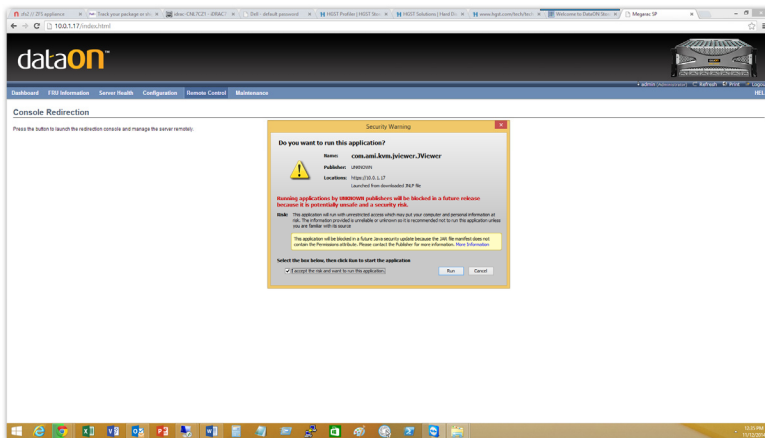
- Once logged in, click option 'Remote Control' and select sub-option 'Console Redirection'.



- On 'Console Redirection', select 'Java Console'.

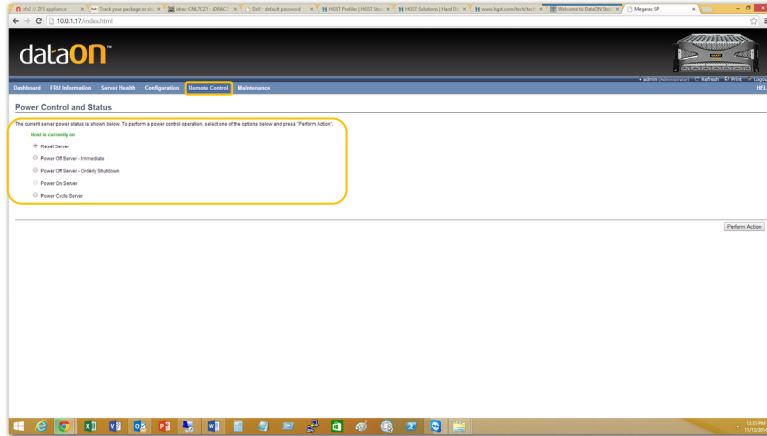


7. Upon logging onto the system via KVM/IP, these pop-ups may appear. Be sure to click 'Run' to run the Java enablement on the web browser to utilize KVM/IP.



## CiB-9470 KVM/IP – Server Power Controls

1. On 'Server Power Control', the user is able to utilize the power controls as shown below.



## CiB-9470 KVM/IP – Virtual Media

1. Once logged into the KVM/IP, click option 'Media' and select sub-option 'Virtual Media Wizard'. On this menu, you can mount your own media (i.e. Floppy Disk, CD/DVD, or HDD/USB) to the system. When finished, click 'Close'. The KVM/IP will require a Power Cycle if virtual media is mounted when system is on BIOS (screenshot below). If system is on OS, no reboot is needed as virtual media can be immediately accessed.

