

CiB-9224

KVM over IP

2015 Version 1.0

Copyright

This publication, including all photographs, illustrations and software, is protected under international copyright laws, with all rights reserved. Neither this manual, nor any of the material contained herein, may be reproduced without the express written consent of the manufacturer.

Copyright © 2014 DataON Storage.

Trademarks

All product names used in this manual are the properties of their respective owners and are acknowledged.

Disclaimer

The information in this document is subject to change without notice. The manufacturer makes no representations or warranties with respect to the contents hereof and specifically disclaims any implied warranties of merchantability or fitness for any particular purpose. Furthermore, the manufacturer reserves the right to revise this publication and to make changes from time to time in the content hereof without obligation of the manufacturer to notify any person of such revision or changes.

Safety Measures

Computer components and electronic circuit boards can be damaged by discharges of static electricity. Working on computers that are still connected to a power supply can be extremely dangerous. Follow these guidelines to avoid damage to the storage system or injury to yourself.

- Always disconnect power when carrying out work inside the unit.
- If possible, wear a grounded wrist strap when carrying out work inside the unit. Alternatively, discharge any static electricity by touching the bare metal chassis of the unit case, or the bare metal body of any other grounded appliance.
- Hold electronic circuit boards by the edges only. Do not touch the components on the board unless it is necessary to do so. Do not flex or stress the circuit board.
- Leave all components inside the static-proof packaging until you are ready to install the component.

Equipment Location

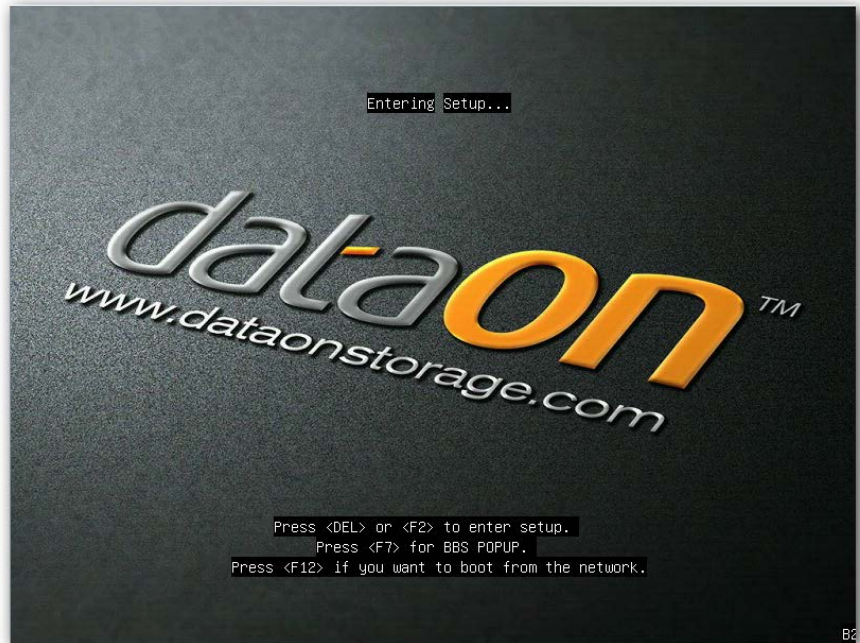
This equipment should only be accessed by SERVICE PERSONNEL or by USERS who have been instructed about the reasons for the restrictions applied to the location. Access is through the use of a TOOL or lock and key, or other means of security, and is controlled by the authority responsible for the location.

About this Guide

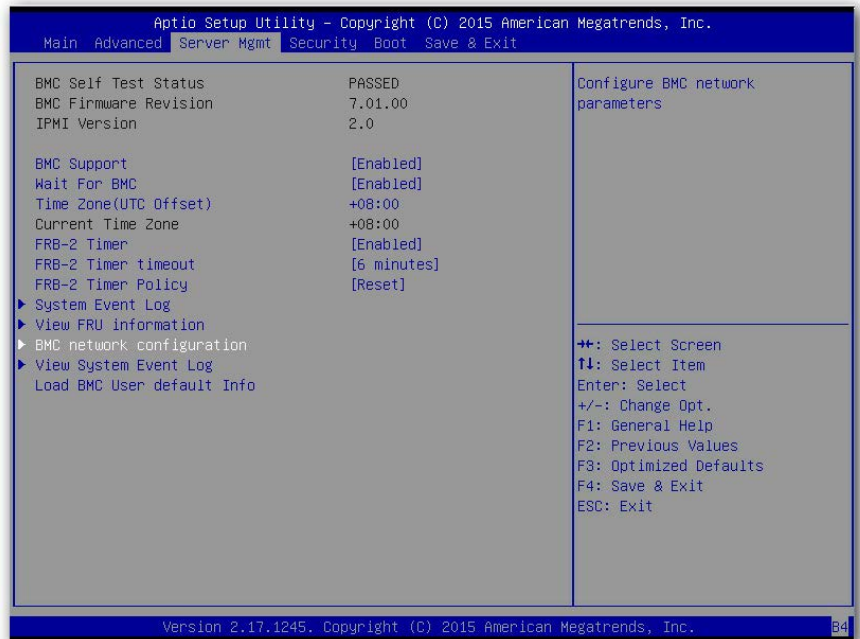
This guide describes CiB-9224 KVM over IP processes.

CiB-9224 KVM/IP

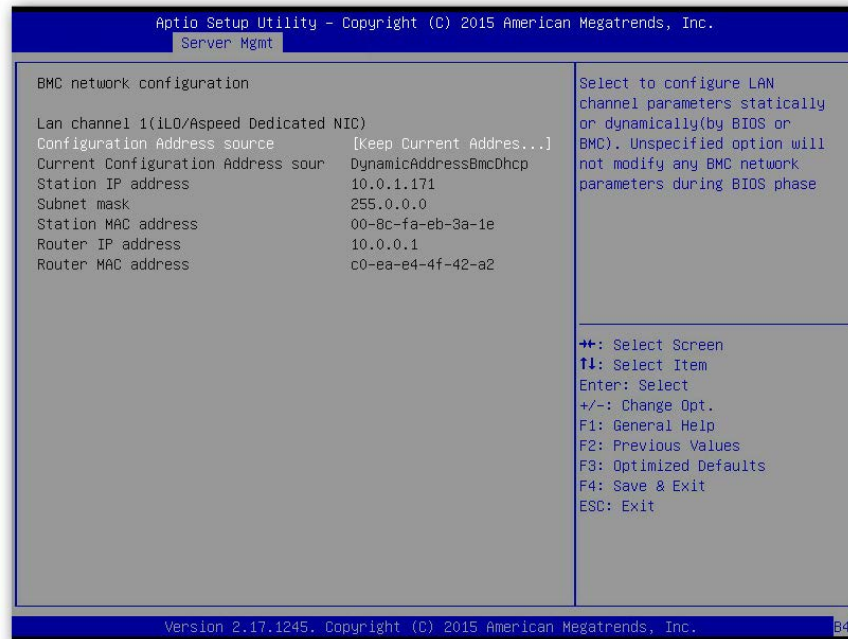
1. Power system. At splash screen, press or <F2> to enter BIOS Setup.



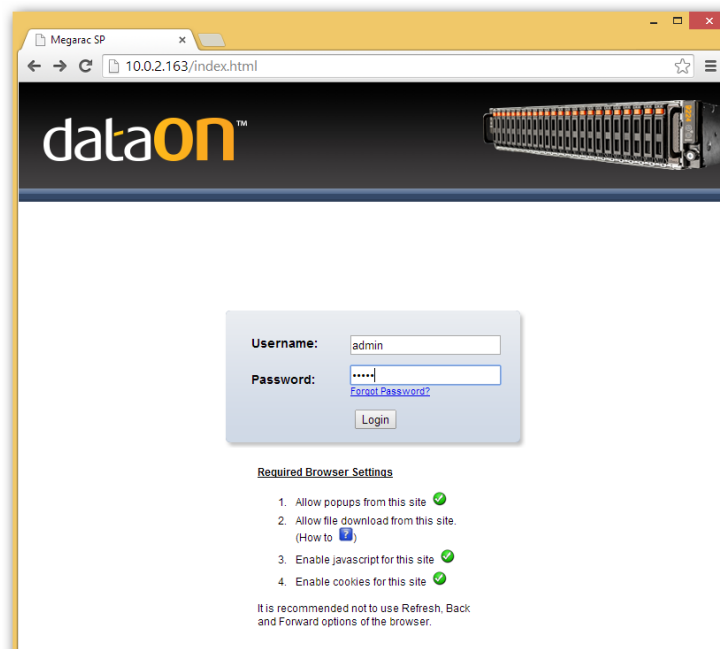
2. On BIOS Setup, use keyboard and select/highlight on option 'Server Mgmt'.



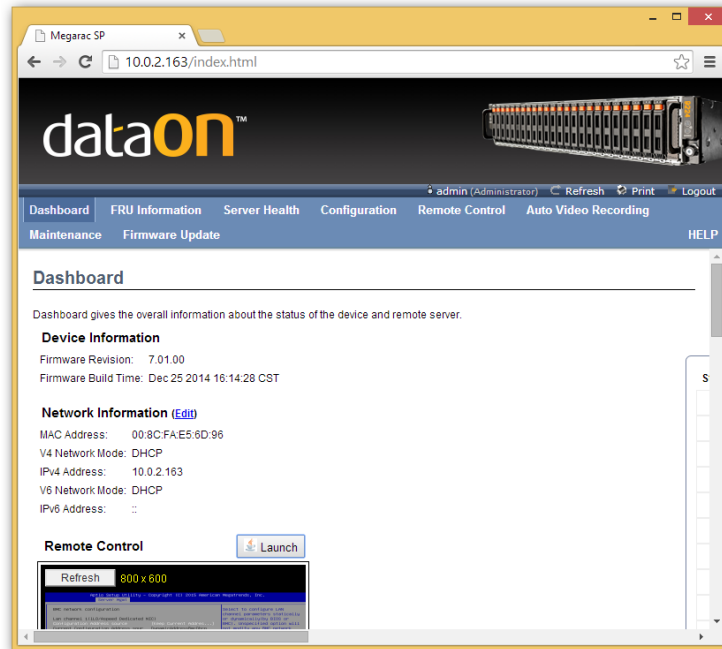
3. On 'BMC network configuration', the station IP address (i.e. 10.0.1.171) is your KVM/IP access to your system via web browser.



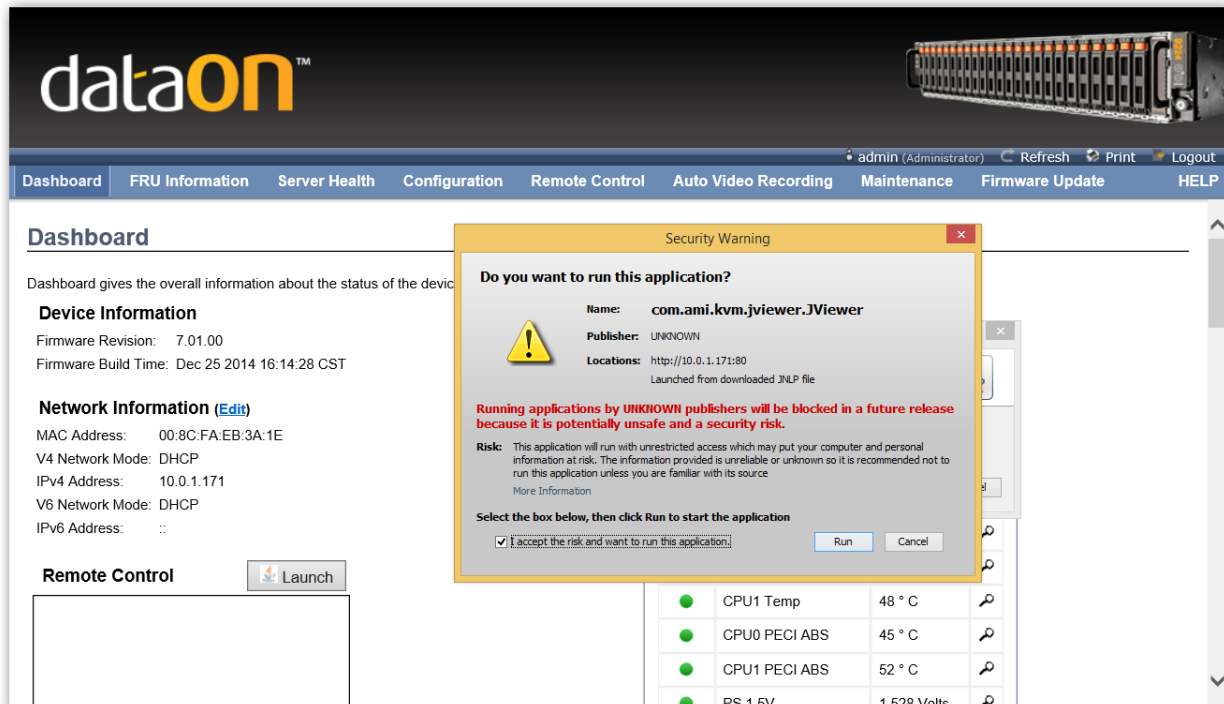
4. On your web browser, type in the station IP address. **The default login (username // password) info is – admin // admin.** Be sure that your browser has pop-ups enabled as well cookies turned on and to have Java enabled.



- Once logged in, click option 'Remote Control' and click 'Launch'.



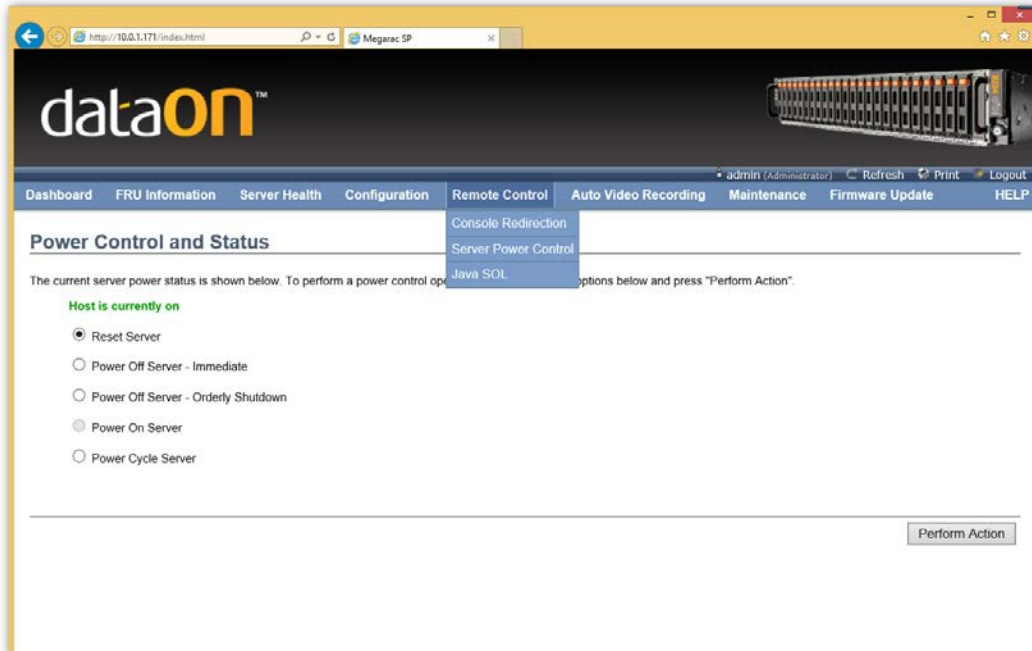
- Upon logging onto the system via KVM/IP, these pop-ups may appear. Be sure to click 'Run' to run the Java enablement on the web browser to utilize KVM/IP.



CiB-9224 KVM/IP – Base Functions

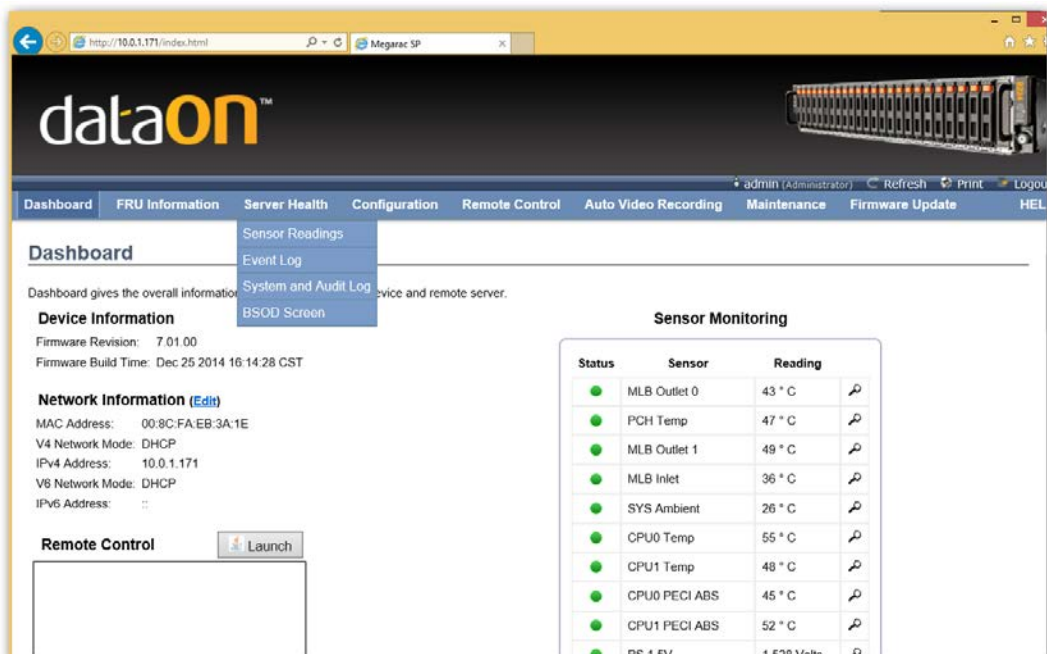
1. Server Power Control

On 'Server Power Control', the user is able to utilize the power controls as shown below.



2. Event Log

Once system failure light is on, user is able to check current status as shown below or "Save Event Logs" and sent back to DataON for analyze.



dataon™

admin (Administrator) Refresh Print Logout

Dashboard FRU Information Server Health Configuration Remote Control Auto Video Recording Maintenance Firmware Update HELP

Event Log

Events generated by the system will be logged here. Double-click on a record to see the description.

All Events filter by: All Sensors Event Log: 120 event entries, 3 page(s)

☒ BMC Timezone ☐ Client Timezone UTC Offset: (GMT+08:00)

Event ID	Time Stamp	Sensor Name	Sensor Type	Description
120	04/20/2015 12:47:12	PEF Action	System Event	Timestamp Clock Synch - Asserted
119	04/20/2015 12:50:10	PEF Action	System Event	Timestamp Clock Synch - Asserted
118	04/20/2015 12:50:10	Unknown	System Boot / Restart Initiated	Initiated By Power Up - Asserted
117	04/20/2015 12:49:50	Unknown	OEM Record	OEM timestamped
116	04/20/2015 12:49:50	Unknown	OS Stop / Shutdown	OS Graceful Shutdown - Asserted
115	04/18/2015 11:52:38	PEF Action	System Event	Timestamp Clock Synch - Asserted
114	04/17/2015 03:47:50	PEF Action	System Event	Timestamp Clock Synch - Asserted
113	04/17/2015 03:47:50	Unknown	System Boot / Restart Initiated	Initiated By Power Up - Asserted

Save Event Logs Clear All Event Logs

3. System administrator

Allow user to enable/disable access and change the password for system administrator account.

dataon™

admin (Administrator) Refresh Print Logout

Dashboard FRU Information Server Health Configuration Remote Control Auto Video Recording Maintenance Firmware Update HELP

System Administrator

This page allows the user to enable/disable access and change the password for the System Administrator account.

Username: sysadmin

User Access: ☒ Enable ☐ Change Password

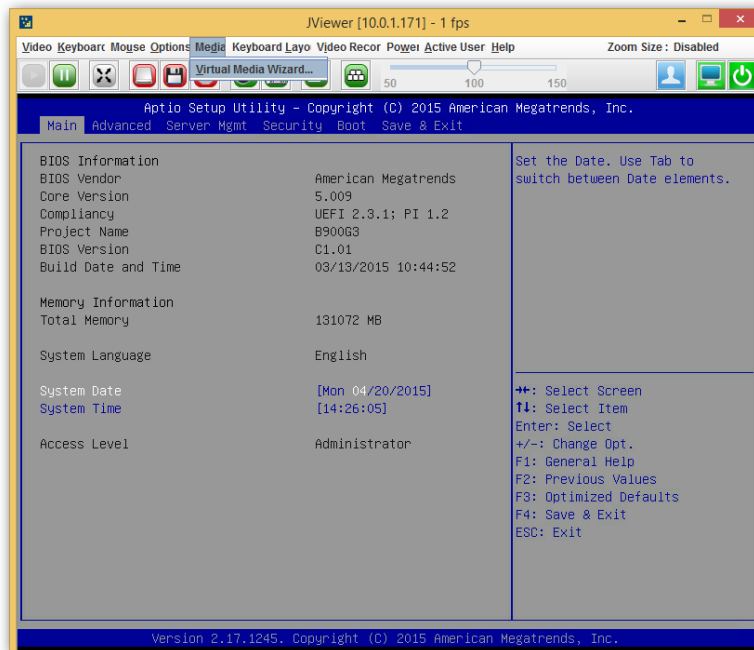
Password: [Input Field]

Confirm Password: [Input Field]

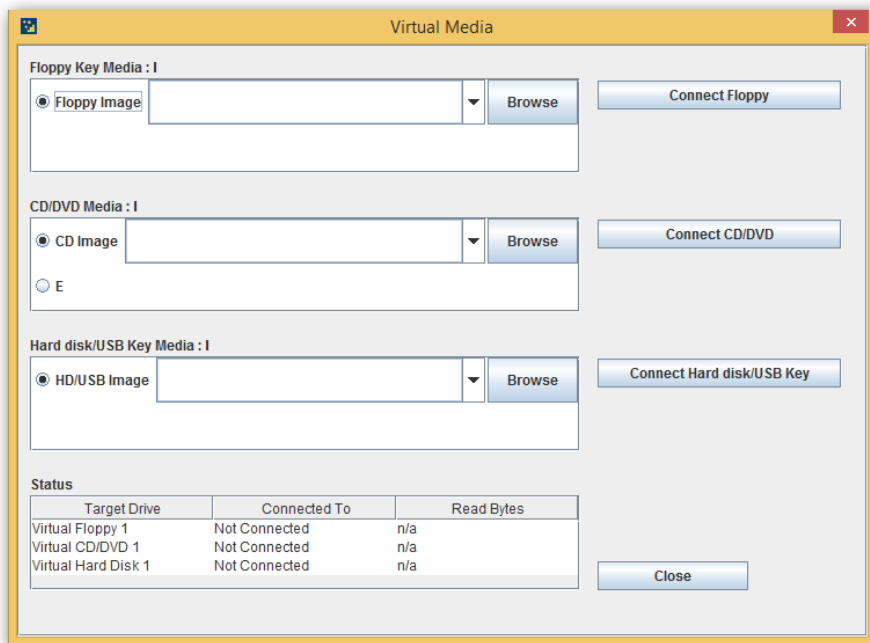
Save Reset

CiB-9224 KVM/IP – Virtual Media

1. Once logged into the KVM/IP, click option 'Media' and select sub-option 'Virtual Media Wizard'.

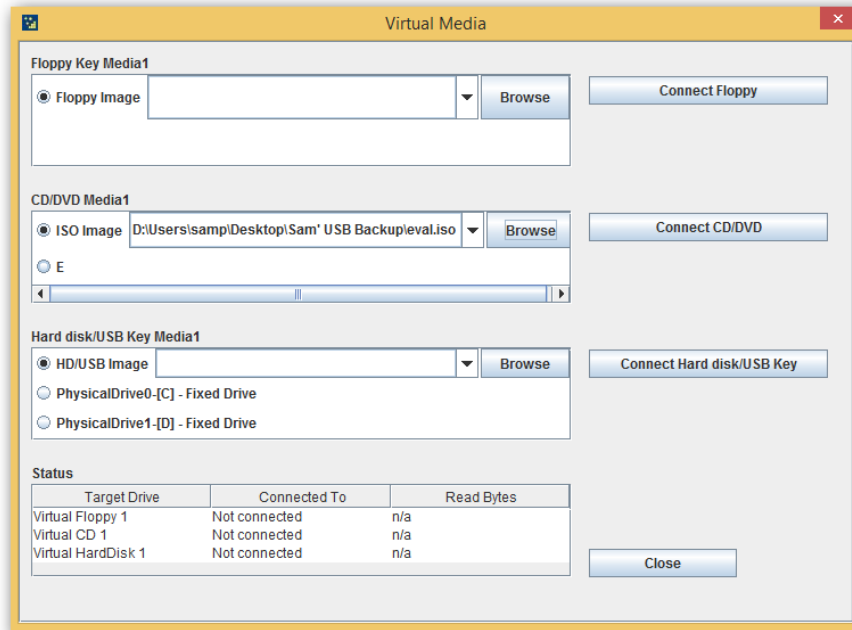


2. On this menu, you can mount your own media (i.e. Floppy Disk, CD/DVD, or HDD/USB) to the system. When finished, click 'Close'. The KVM/IP will require a Power Cycle if virtual media is mounted when system is on BIOS (screenshot below). If system is on OS, no reboot is needed as virtual media can be immediately accessed.



Example:

We can mount the image to virtual DVD as image. After mount the image click “connect CD/DVD”.



Restart the CiB-9224 and press “F7” go to boot selection. Select “UEFI: AMI Virtual CDROM0 1.00” to install the image.

***CiB-9224 ONLY Support UEFI boot up ***

